



# **BIG WITCH HAT PATTERN**

# How to scale and print these patterns

Hello there! To properly print these patterns I recommend using a PDF reader that supports tiled / poster print. At the time of writing, [Adobe Acrobat](#) offers this (only in the paid version sadly) but [Foxit PDF Reader](#) also offers a free version with the same features. If they ever decide to also paywall this feature however, just do a quick google search for "pdf reader with tiled oversize print". There are plenty more alternatives around.

Once you've settled on a program, open the pattern pdf file and go to **file -> print** to get to the printing options window.

Do **not** select the "Size" or "Scale" option. This will lead to your patterns being printed out either too small or cut off (see top image).

Instead go ahead and choose "Tile Large Pages" or "Poster"! This will make your image print over multiple pages.

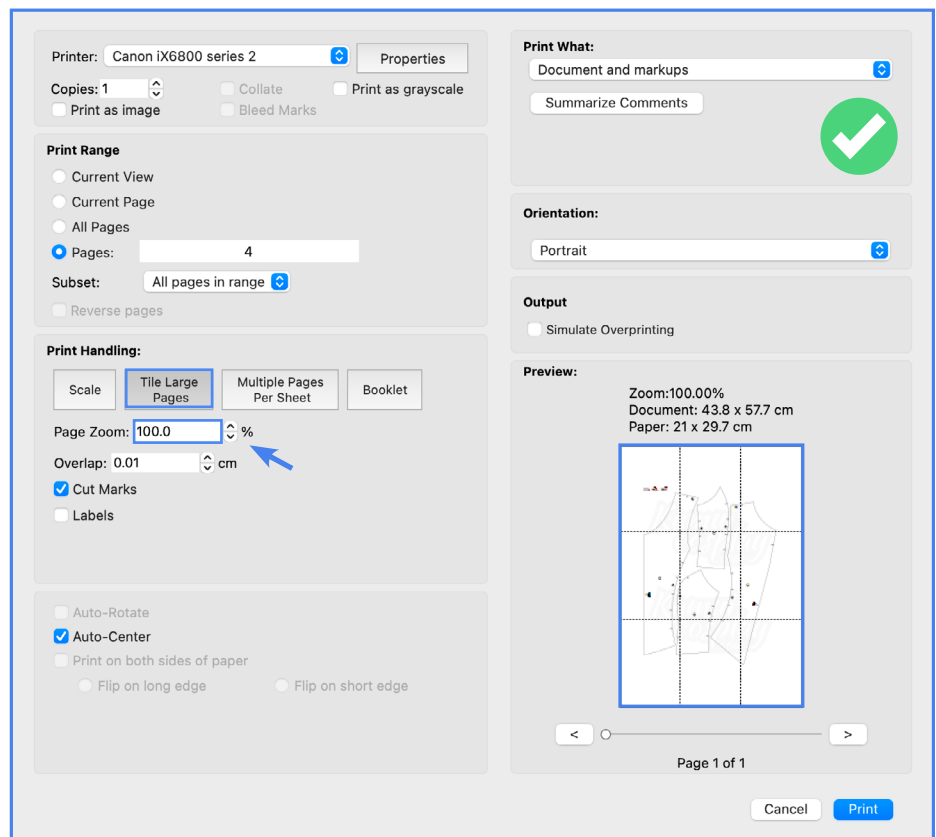
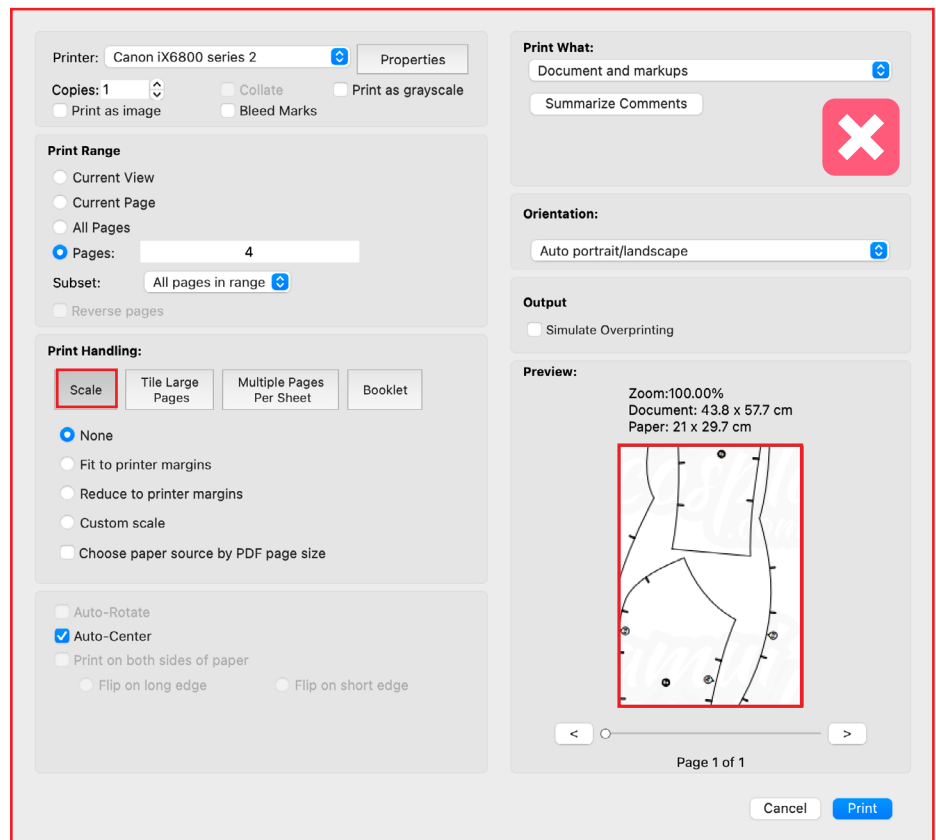
Here you can also set your "Scale". 100% is the original size but you can scale your patterns up or down by printing them larger or smaller.

All patterns are designed on my own body. My height is 174cm/5'7" and my clothing size is upper body EU38/US8 and lower body EU40/US10. My head circumference for helmets and hats is 56.5cm/22.2inch. Simply change the scale if you want to print the patterns larger or smaller.

Happy crafting!

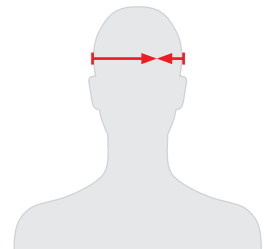
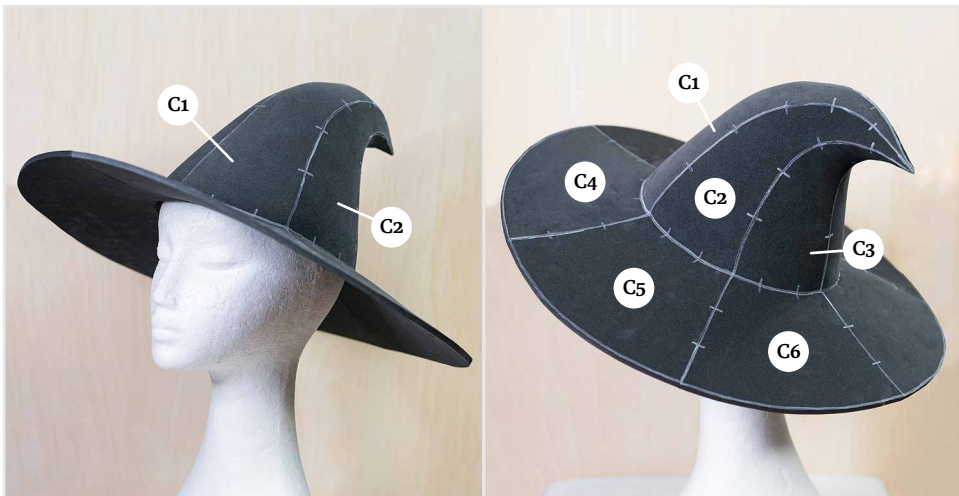
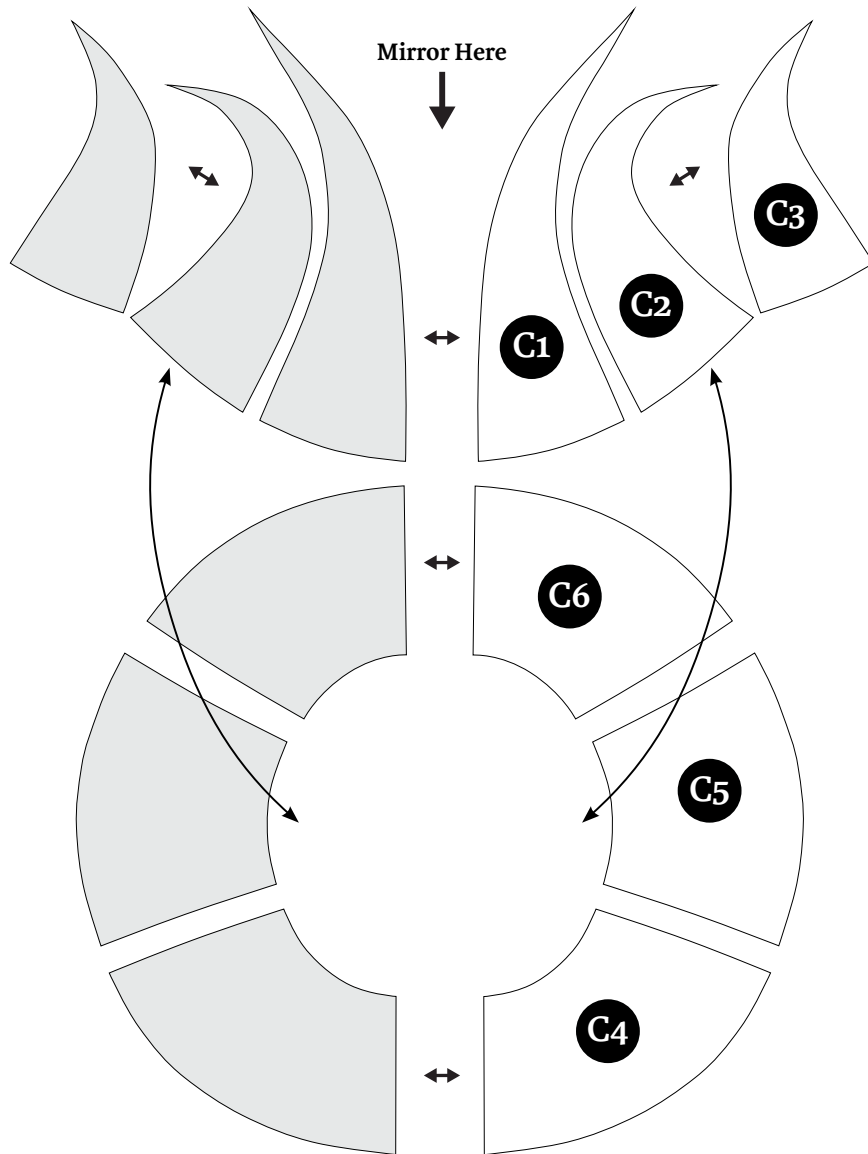
Instructional video on this page:  
[kamicosplay.com/product/hatpatterns/](https://kamicosplay.com/product/hatpatterns/)

Video on how to scale patterns:  
<https://youtu.be/G8zAmWbSbMs>



# Big Witch Hat Pattern

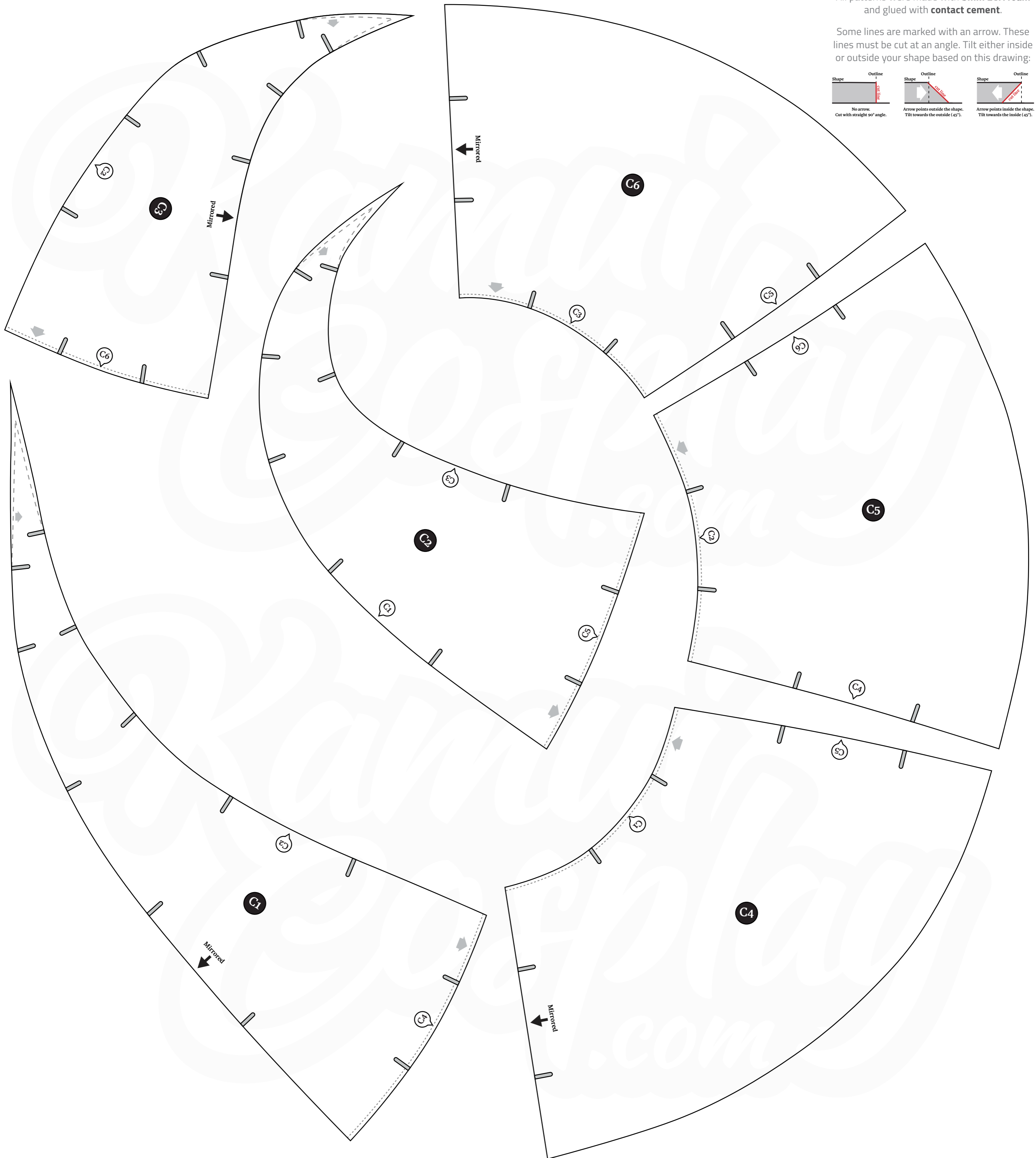
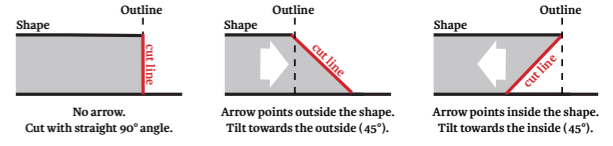
( print page 4 )



Circumference in cm	Print in Scale	Circumference in inch
45 cm	80 %	17.7 inch
50.7 cm	90 %	20 inch
<b>56.4 cm</b>	<b>100 %</b>	<b>22.2 inch</b>
62 cm	110 %	24.4 inch
67.6 cm	120 %	26.6 inch

All patterns were made with **5mm EVA foam** and glued with **contact cement**.

Some lines are marked with an arrow. These lines must be cut at an angle. Tilt either inside or outside your shape based on this drawing:



I hope these patterns are useful and will help you  
create your own awesome costumes!

---

Check out our website for more tutorials, write-ups and videos.

[www.kamuicosplay.com](http://www.kamuicosplay.com)

Do you have a question about a costume or prop you want to  
create? Join our community group on Facebook:

[facebook.com/groups/kamuicosplaycommunity](https://facebook.com/groups/kamuicosplaycommunity)

You can always find us on:

[facebook.com/kamuicos](https://facebook.com/kamuicos)

[instagram.com/kamuicosplay](https://instagram.com/kamuicosplay)

[youtube.com/kamuicosplayofficial](https://youtube.com/kamuicosplayofficial)

[twitter.com/kamuicosplay](https://twitter.com/kamuicosplay)

And if you like our videos you can support us on:

[patreon.com/kamuicosplay](https://patreon.com/kamuicosplay)



---

Copyright © 2020 by Svetlana & Benjamin Schwarz.

All rights reserved. It's not allowed to copy, reproduce or resell these patterns nor any part thereof without the express written permission of Kamui Cosplay. We do not claim liability or take responsibility for any harm or damages caused while crafting. Please work carefully and responsibly.

First Release, 2020, Germany

Creator and Layout: Benjamin Schwarz

[www.kamuicosplay.com](http://www.kamuicosplay.com)